



For over a decade, **Reed's Metals, Inc.**, has set the industry standard for manufacturing quality metal products in the southeastern United States. Customer satisfaction is our No.1 priority.

Our company was founded with this principal in mind and we strive to exceed our customers' expectations for quality and service. Reed's Metals specializes in metal roofing and pre-engineered steel buildings at competitive prices. Headquartered in Brookhaven, Miss., we also have locations in Tupelo, Miss., and Lake Charles, La., to better serve our customers.

There are five profiles to choose from in more than 22 colors in stock, along with an extensive list of accessories. By using state-of-the-art software and equipment, we are able to meet the needs of our valued customers.

**Brookhaven, MS**

19 E. Lincoln Drive NE  
Brookhaven, MS 39601  
601-823-6516  
Toll Free 800-581-4645

**Lake Charles, LA**

2716 E. Napoleon St.  
Sulphur, LA 70663  
337-625-5051

**Tupelo, MS**

120 Industrial Park Road  
Saltillo, MS 38866  
662-869-7797

[WWW.REEDSMETALS.COM](http://WWW.REEDSMETALS.COM)

**REED'S METALS, INC.**

Metal Roofing &  
Steel Building  
Manufacturer



SERVING THE SOUTHEASTERN U.S.

CUSTOMER SATISFACTION GUARANTEED!

1-800-581-4645

METAL ROOFING

PRE-ENGINEERED METAL BUILDINGS

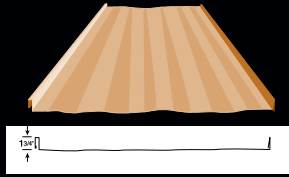
Order today and pick it up today, or we can deliver to you within 72 hours. Our specially trained outside sales team will come to you. We supply you with customized service to keep you up to code, on time and under budget.

**Call us today**  
for delivery.

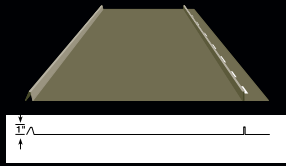


[WWW.REEDSMETALS.COM](http://WWW.REEDSMETALS.COM)

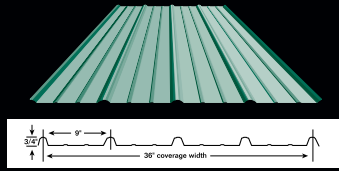
# Six Different Profiles to Choose From



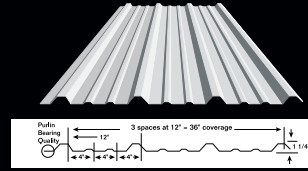
**Secure-Seam Standing Seam Panel**  
net coverage 14, 16 or 18"



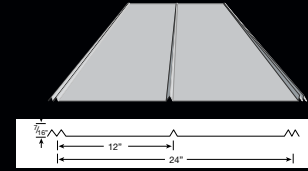
**Perma-Loc Standing Seam Panel**  
net coverage 12 or 16"



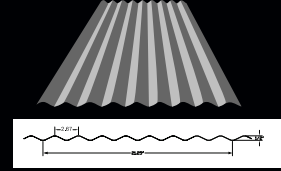
**Residential Panel**  
net coverage 36"



**PBR Commercial**  
net coverage 36"



**5-V Panel**  
net coverage 24"



**Corrugated Panel**  
net coverage 24"



## Manufacturing



**Buy Direct from the Manufacturer and Save!**



**Choose from over 20 colors!**



**Custom Trim Available!**

## Econo-Buildings

When simplicity, functionality and durability is essential our Econo-Building is your answer. The Econo-Building is the economical solution to storage, utility, or business building basics.



## Rigid-Frame Buildings

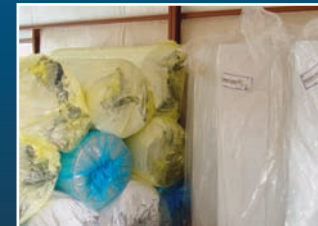
If you are in need of a certified, pre-engineered building with its expansive open bays, or custom building designs Reed's Metals can provide the options you need to make smart decisions. From churches to riding arenas, we manufacture to your needs!



## Inventory



**Roll Up Doors**



**Insulation**



**Purlins & Trusses**



**Accessories**